

Supplementary information

Sestrin mediates detection of and adaptation to low-leucine diets in *Drosophila*

In the format provided by the authors and unedited

Figure 1c

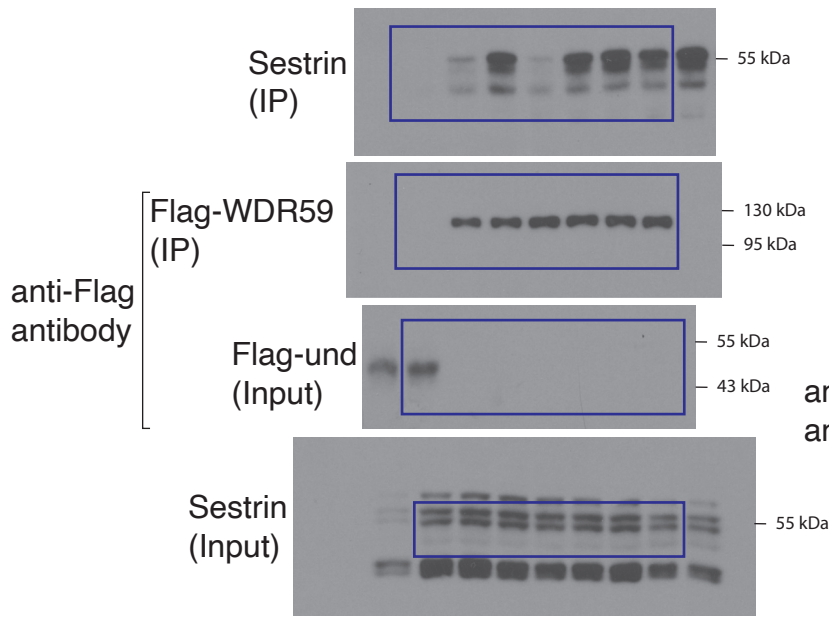


Figure 1d

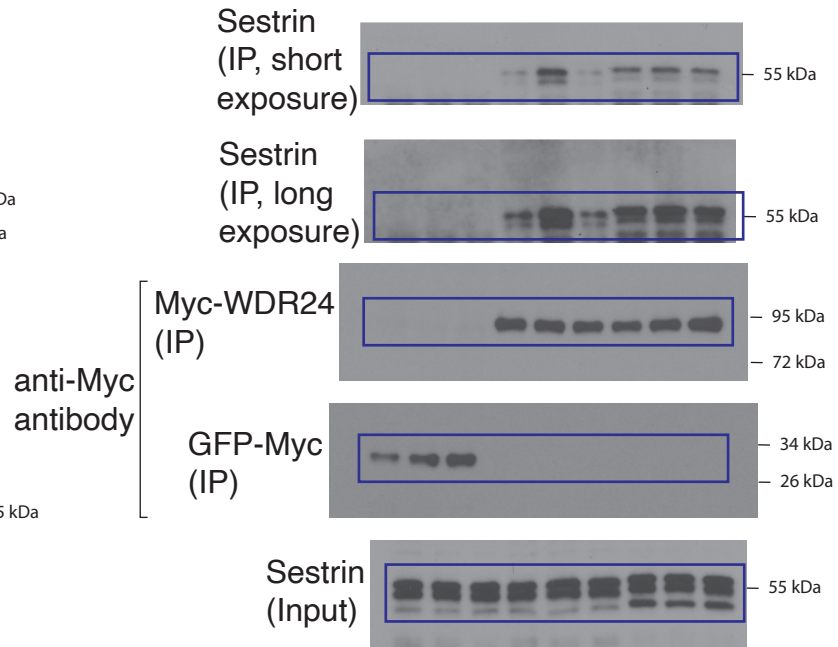


Figure 1e

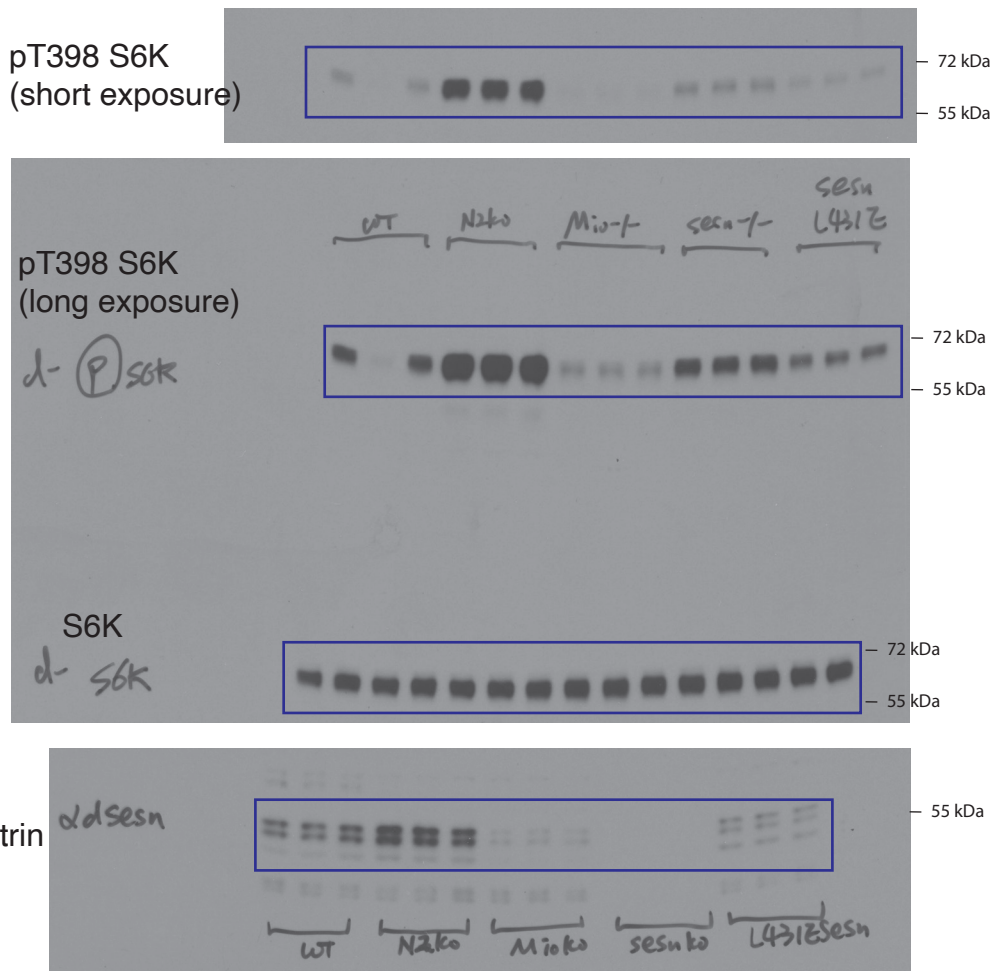


Figure 3j

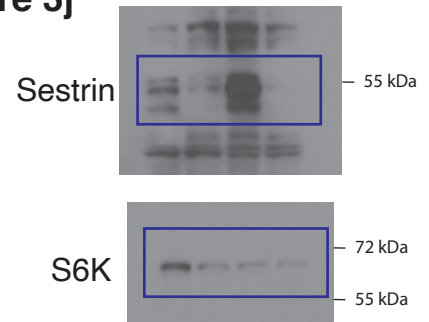
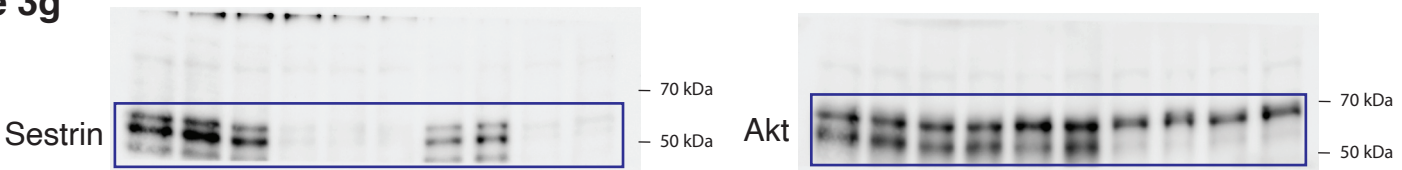
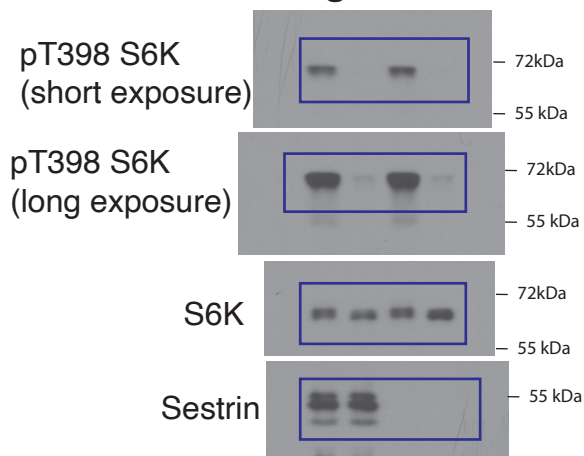


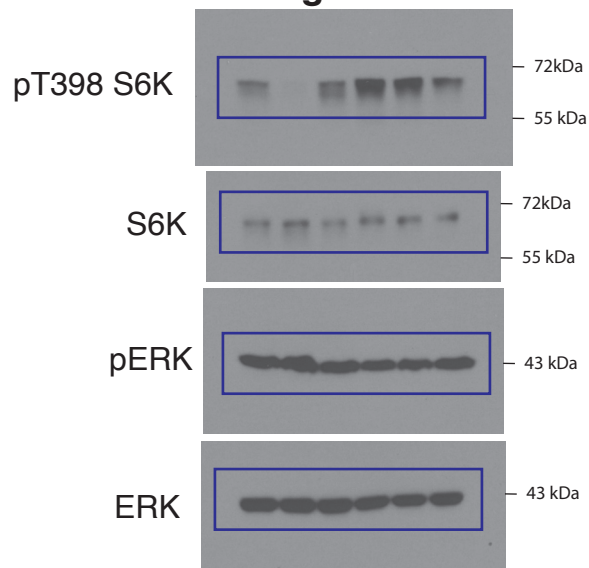
Figure 3g



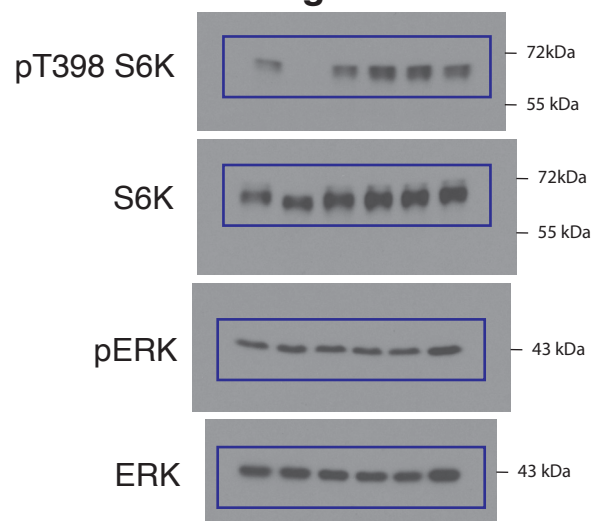
Extended Data Fig 1d



Extended Data Fig 3a



Extended Data Fig 3b



Extended Data Fig 3c

