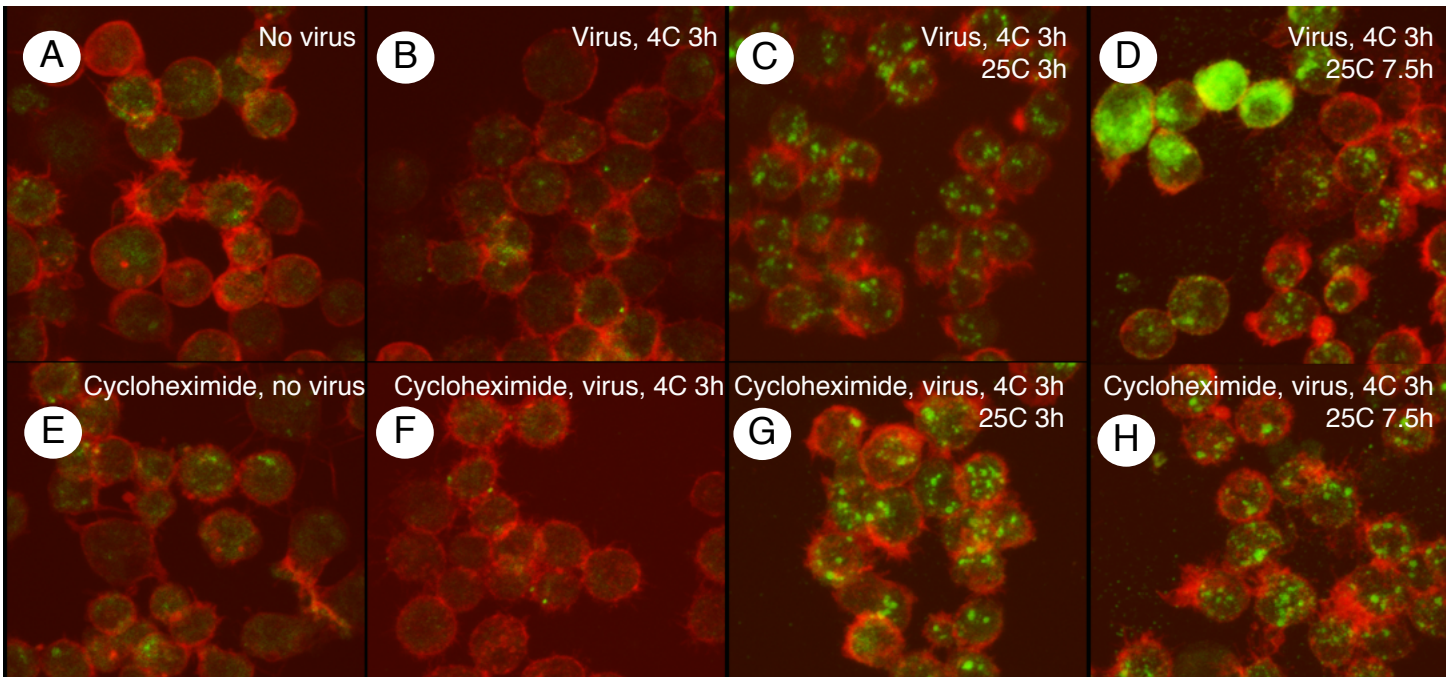


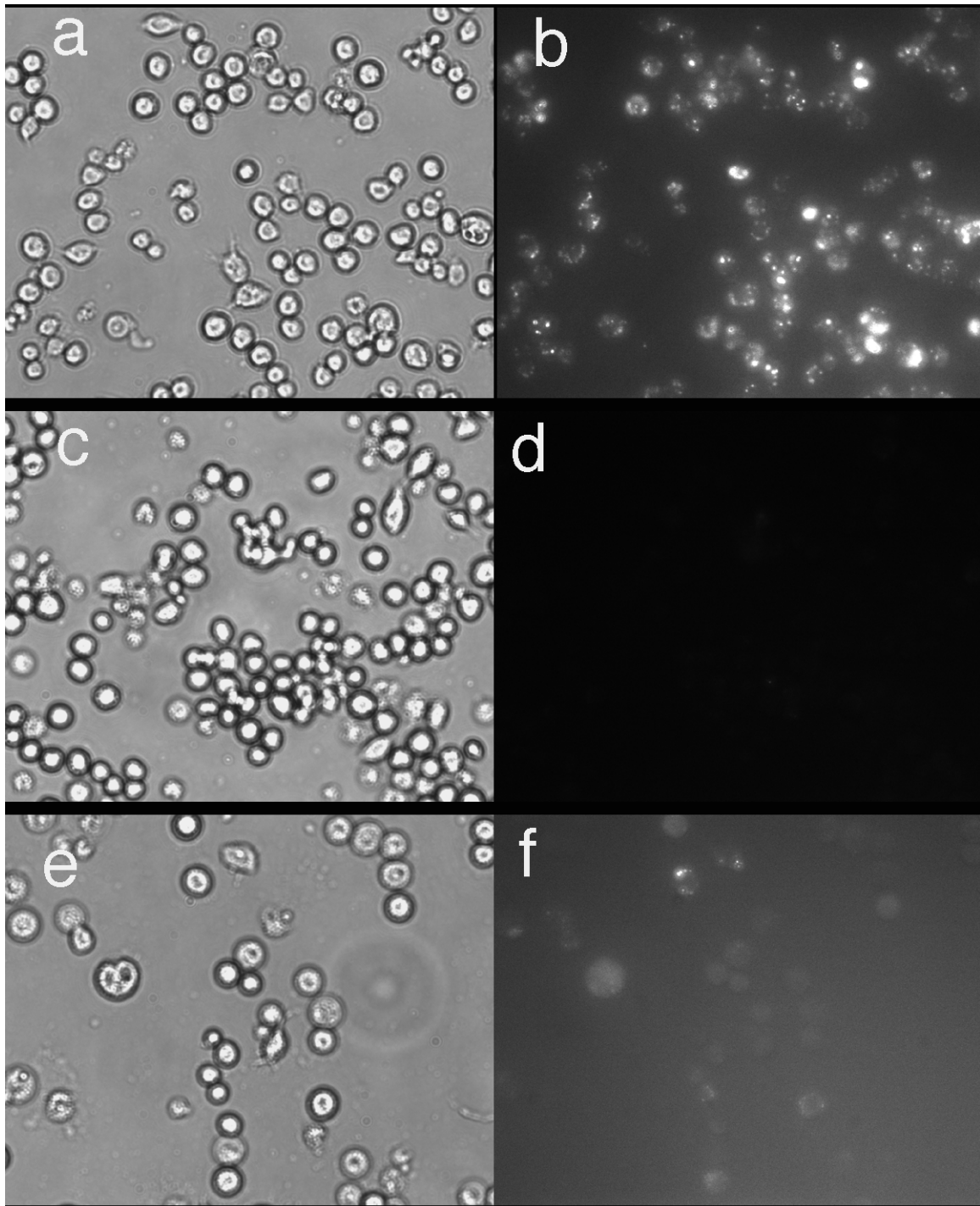
Supplementary Figure 1



Supplementary Figure 1 Cycloheximide blocks the synthesis of new viral proteins.

(a) Time course of infection monitored by immunofluorescence. Cells are uninfected (**A**) infected for 3 h at 4C to allow surface binding but no endocytosis (**B**), infected for 3 h at 4C followed by 3 h at 25C to release the block to endocytosis and follow viral trafficking (**C**), and infected for 3 h at 4C followed by 7.5 h at 25C to monitor the initiation of new viral replication (**D**). Panels **E-H** are the same time course as in **A-D** except cycloheximide was added 15 min prior to the $t=0$. (anti-DCV in green, Alexa Fluor-568 Phalloidin in red).

Supplementary Figure 2



Supplementary Figure 2 Valinomycin and bafilomycin A1 block vesicular trafficking.

Phase contrast microscopy of cells treated with lysotracker in the absence **(a)** or presence of bafilomycin A1 **(c)** or valinomycin **(e)**. The cells were also visualized for the uptake of the lysotracker probe in the absence **(b)** or presence of bafilomycin A1 **(d)** or valinomycin **(f)**.