

Supplementary Information for "*Drosophila* Stardust interacts with Crumbs to control polarity of epithelia but not neuroblasts"

Nature, V414, 634

Antibody Dilution Factors for "Methods" section:

Dilution factors for primary antibodies were as follows: rabbit anti-Sdt C-terminus 1:100, mouse MAb 22C10 1:200, mouse anti-Crb 1:100 (Cq4, Hybridoma Bank), mouse anti-Arm 1:50 (Hybridoma Bank), mouse anti-Cor 1:500 (Hybridoma Bank), rat anti-DE-Cad 1:20 (from T. Uemura), guinea pig anti-Dlg 1:1000 (from P.J. Bryant), rabbit anti-Baz 1:1000 (ref. 7), rabbit anti-DPar-6 1:500 (ref. 12), rabbit anti-aPKC 1:1000 (ref. 21), rabbit anti-Dlt 1:1000 (ref. 13), rabbit anti-Mir 1:1500 (ref. 22), rabbit anti-Scrib 1:1500 (ref. 14), rabbit anti-b-gal 1:3000 (ICN).

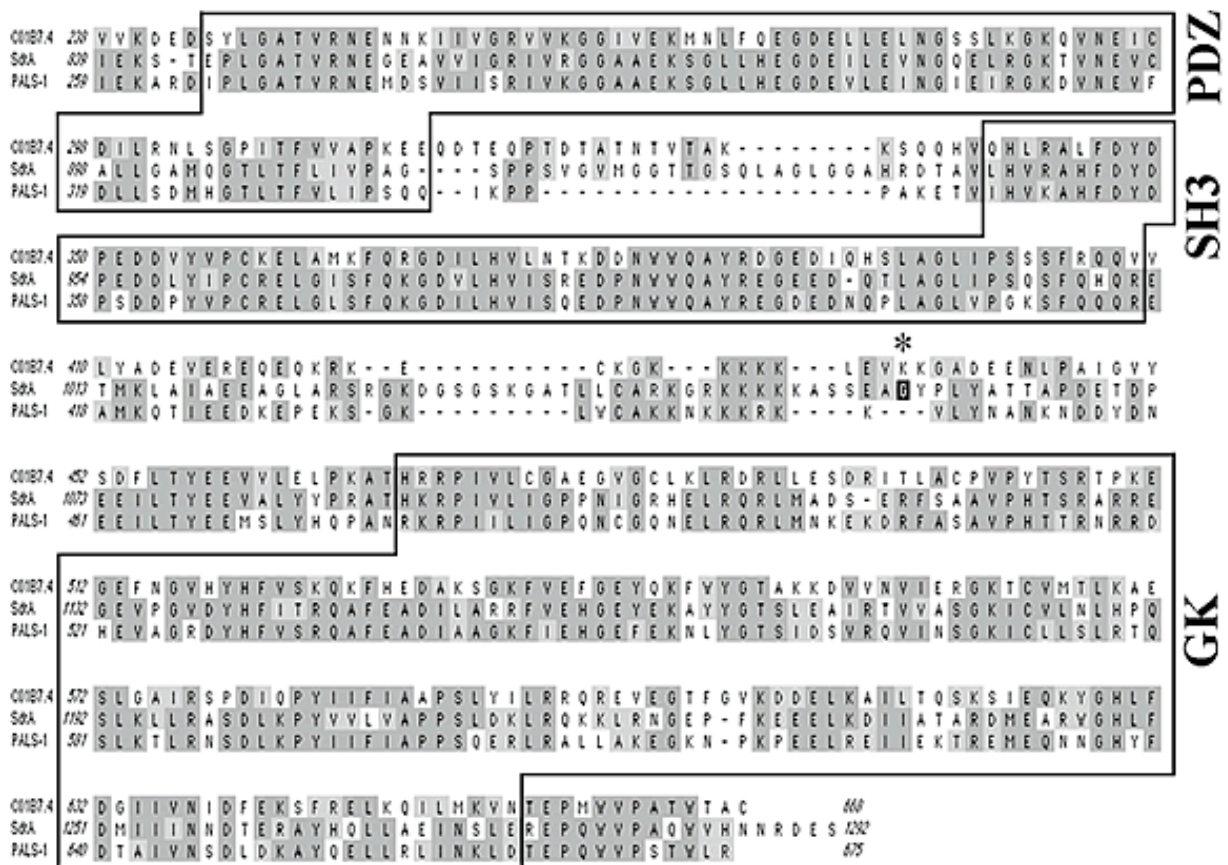


Figure S1. Protein sequence alignment of the predicted *C. elegans* protein C10B7.4, SdtA, and mouse PALS-1. Only the alignment of C-terminal half of the proteins is shown. Asterisk indicates where Sdt^{XP96} protein is truncated.